

PROJECT:	DATE:
PREPARED BY:	NOTES:

## PANEL LIGHT SPECIFICATIONS

### DESCRIPTION

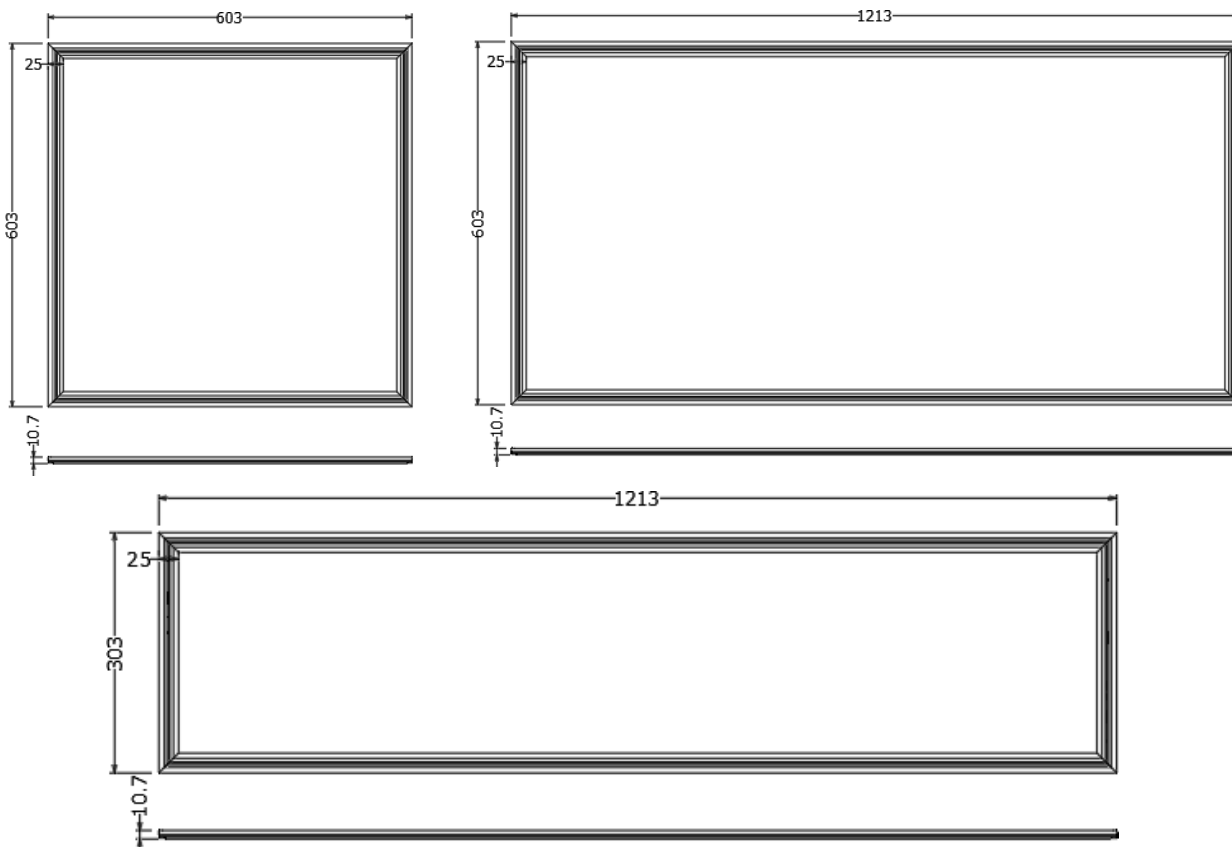
- \* High efficiency & energy saving. Under the condition of the same illumination, it saves more than 67% energy compared with the traditional lamp.
- \* Long life span, using semiconductor chip as the light resource, the life can be over 50,000hrs.
- \* No UV & IR, It won't distribute ray radiation.
- \* Eco-friendly, No Hg & Xe , or other harmful element. Recyclable, also it won't generate EMI.
- \* High-performance external constant current driver, flat and smooth frame, very easy to clean.



### COMMON TECHNICAL DATA

Model	BQ-FPL-L2X2-40XX	BQ-FPL-L1X4-40XX	BQ-FPL-L2X4-50XX
Power	40W	40W	50W
Input Voltage/Frequency	AC100-277V 50/60Hz	AC100-277V 50/60Hz	AC100-277V 50/60Hz
Input Current(Typ)	0.4A	0.4A	0.5A
Output Voltage	DC30-40V	DC30-40V	DC30-40V
Output Current	950mA	950mA	1100mA
Power Factor	PF > 0.9	PF > 0.9	PF > 0.9

### Dimension(mm)



## Lighting Parameters

LED Consumption	40W	40W	50W
Specification size	2x2ft	1x4ft	2x4ft
Lumen	5000±200LM	5000±200LM	6200±200LM
Color Temperature	3000/4000/6000K	3000/4000/6000K	3000/4000/6000K
Color Rendering Index	Ra≥80	Ra≥80	Ra≥80
Operating Temperature	-25 ~ +40 °C	-25 ~ +40 °C	-25 ~ +40 °C
IP Grade	IP40	IP40	IP40
Life-span	>30000Hrs	>30000Hrs	>30000Hrs
LED Chips	San'an / Epistar	San'an / Epistar	San'an / Epistar
Energy efficiency	A <sup>+</sup>	A <sup>+</sup>	A <sup>+</sup>
Beam Angle	120DEG	120DEG	120DEG
Frame Materials	Aluminum	Aluminum	Aluminum
Appliance Class	Class II	Class II	Class II
Certification	UL, DLC, FCC, CE, RoHS	UL, DLC, FCC, CE, RoHS	UL, DLC, FCC, CE, RoHS

## WARNING

-Input voltage AC100-277V, off when installation to prevent electric shock

-Product IP40 waterproof level, Indoor use only and don't used in too high temperature place.

-When the temperature is too high, Over-temperature control circuitry activates, output will be cut off, and the lamp will light off for a few minutes, After lowering temperature will be back to normal.

## CAUTION

- Risk of electric shock;

## PACKAGE

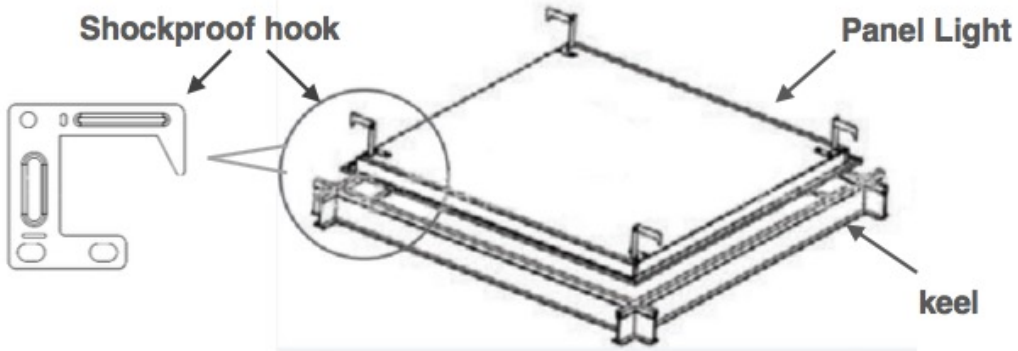
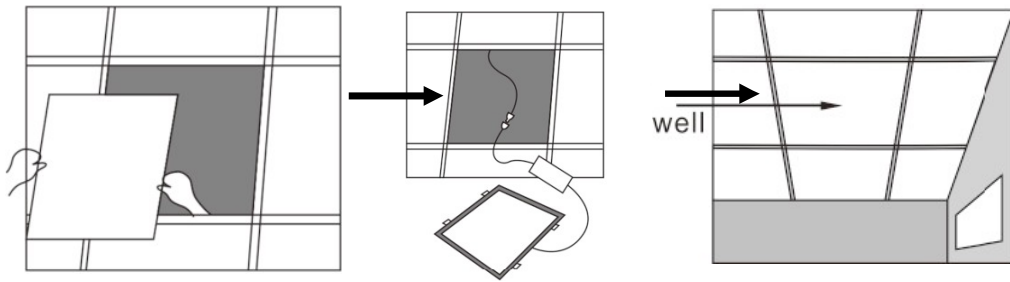
Item No.	Net Weight	Package Size	QTY/Carton	Carton Size	Cross Weight
BQ-FPL-L2X2-40XX	3kg	65*10*65 cm	4	66*20*66 cm	13kg
BQ-FPL-L1X4-40XX	3.25kg	126*10*35 cm	4	127*20*36 cm	14kg
BQ-FPL-L2X4-50XX	6.2kg	126*10*65 cm	4	127*20*66 cm	26kg

## REMARK

- All of the mechanical, electrical and light characteristics in this document are typical value.

## WARRANTY

This product has a warranty for a period of 5 years from the date of purchase. The warranty is invalid in the case of improper installation, tampering, or removal of the Q.C. date label. Installation in an improper working environment or installation not according to the current edition of the National Electric Code also invalidates the warranty. If this product fails during the warranty period, it will be replaced free of charge, subject to correct installation and return of the faulty unit. ALI does not take responsibility for any installation costs associated with the replacement of this product. This warranty is an addition to the statutory rights in the country of purchase. ALI reserves the right to alter specifications without prior notice.



Note:

1. Shock proof hook is used for positioning (NOT for mounting).
2. THIS PRODUCT MUST BE INSTALLED IN ACCORDANCE WITH THE APPLICABLE INSTALLATION CODE BY A PERSON FAMILIAR WITH THE CONSTRUCTION AND OPERATION OF THE PRODUCT AND THE HAZARDS INVOLVED.